



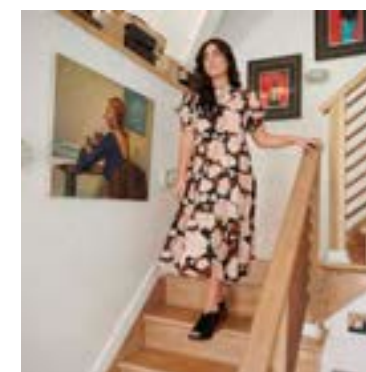
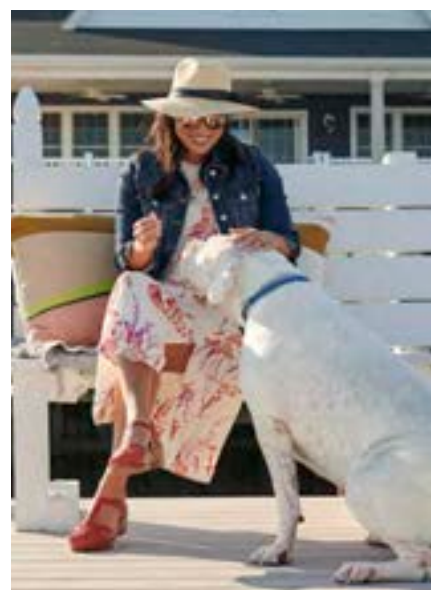
Alegria[®]

by PG Lite

SPRING & SUMMER
2021 COLLECTION



SPRING
&
SUMMER
2021





This Is What Happy Looks Like®

Alegria's Patented Interlocking Footbed



Alegria by PG Lite® started with a simple idea in mind: to create a stylishly comfortable shoe that brings you and your feet happiness.

Our signature removable footbed is ergonomically designed to fit the natural contours of your feet; working to relieve your legs, hip, and back from long standing hours. The signature footbed contains our specifically-formulated soft polyurethane, cork and memory foam blend, and is lined with supple leather.

We give life to this idea by combining comfort with uniquely vivid prints for the everyday person. Whether you are looking for our Signature, Professional, Boot, or Sandal Collection there is something stylish and comfortable for everyone.



APMA ACCEPTED

Alegria by PG Lite® has been awarded the American Podiatric Medical Association (APMA) Seal of Acceptance*

*on select styles and footbeds



SPRING & SUMMER 2021

ALCHEMIE	56	POLY	69
BAILEE	31	POSY	69
BEATRIX	32	ROSIE	61
BELLE	47	ROZ	23
BRENNA	48	SERENITI	58
BROOK	49	SEVILLE	45
BRYCE	30	SHAYNE	63
CAITI	67	SITKA	66
CARINA	8	SLOAN	65
CELESTE	59	SOCKS	70
CHARLETTE	62	STEEVE	64
CHERI	62	SUMMER	60
CHERYL	63	TAMSYN	26
CLASSIC	38	TARAH	28
CLASSIC	38	TOVA	27
CODI	10	VALERIE	17
DAHLIA	68	VERONA	16
DAISIE	68	VICTORIAH	14
DAPHNE	68	VIENNA	18
DEBRA	42	VIOLETTE	15
DELIAH	46	VIVICA	13
DUETTE	54		
EDEN	34		
ELLY	37		
ERYN	64		
EVIE	33		
HARLIE	25		
HENNA	24		
JOLEEN	53		
KASHA	11		
KAYLA	52		
KELI	50		
KERRI	12		
KHLOE	66		
KOURTNEY	66		
LANIE	20		
LAYAH	19		
LEAH	21		
LEISURELEE	67		
LUCIA	22		
ODE	29		
OLIVIA	36		
PALOMA	41		
PARKER	69		



WIDE FOOTBEDS ARE SOLD SEPARATELY, SEE PAGE 73

CARINA



This popular silhouette comes on our Classic Rocker outsole and is sure to get you through a warm day in comfort. The Carina offers an adjustable hook-and-loop closure and leather lining. Stunning hardware is the cherry on top of this thong sandal.



- MATERIAL** | Leather upper and lining
- OUTSOLE** | Classic Rocker
- HEEL HEIGHT** | 1¾ Inch
- SIZE RUN** | 35–42 (medium width only)
- HIGHLIGHTS** |
 - APMA accepted
 - Hand-stitched
 - Leather upper and lining
 - Adjustable hook-and-loop closure
 - Suede leather footbed
 - Slip-resistant outsole
 - Non-marking outsole

CODI



The perfect sandal for your favorite outfit. The Codi is simple yet unique! Its traditional silhouette is paired with a one-of-a-kind buckle, keeping you comfortable and stylish.



COD-168
SEASCAPE



COD-886
WHITE SHEEN



- MATERIAL** | Leather upper and lining
- OUTSOLE** | Classic Rocker
- HEEL HEIGHT** | 1¾ Inch
- SIZE RUN** | 35–42 (medium width only)
- HIGHLIGHTS** |
 - APMA accepted
 - Hand-stitched
 - Adjustable hook-and-loop closure
 - Suede leather footbed
 - Slip-resistant outsole
 - Non-marking outsole

KASHA



The Kasha is a hand-stitched gladiator style slide made on our Classic Rocker bottom with a patented removable footbed that easily converts to wide width. This fashionable upper features two adjustable hook-and-loop closures.



KAS-7703
SAVAGE



KAS-7715
IVY



KAS-7718
RITZ



KAS-7745
DIVERSIFIED



- MATERIAL** | Leather upper and lining
- OUTSOLE** | Classic Rocker
- HEEL HEIGHT** | 1¾ Inch
- SIZE RUN** | 35–42
- HIGHLIGHTS** |
 - APMA accepted
 - Patented removable footbed; replacement available in medium and wide (ALG-999 footbed)
 - Hand-stitched
 - Two adjustable hook-and-loop closures
 - Suede leather footbed
 - Slip-resistant outsole
 - Non-marking outsole

KERRI



VIVICA



The Kerri is a comfy T-strap style sandal made on our Classic Rocker bottom with a patented removable footbed that easily converts to wide width. It has a slip-resistant outsole and features two adjustable hook-and-loop closures.



KER-878
TRELLIS



KER-940
LUSH



KER-7707
SPRINGER



KER-7746
AMAZING BLACK



KER-7748
SMOLDER



KER-7749
TRIBE CALLED CUTIE



MATERIAL | Leather upper and lining
OUTSOLE | Classic Rocker
HEEL HEIGHT | 1 3/4 Inch
SIZE RUN | 35-42

HIGHLIGHTS

- APMA accepted
- Patented removable footbed; replacement available in medium and wide (ALG-999 footbed)
- Hand-stitched
- Two adjustable hook-and-loop closures
- Suede leather footbed
- Slip-resistant outsole
- Non-marking outsole

Vivica is a hand-stitched fashion slide made on our Mini outsole, designed to mimic a natural rocking motion for improved pressure distribution across the bottom of the foot. It has leather upper and lining, and one adjustable hook-and-loop closure adorned with unique hardware. The patented footbed is ergonomically designed to conform the natural contour of the foot, working to relieve legs, hip and back from long standing hours.



VIV-7702
SCORE



VIV-7706
WOODLAND WONDERS



VIV-7707
SPRINGER



VIV-7718
RITZ



MATERIAL | Leather upper and lining
OUTSOLE | Mini Outsole
HEEL HEIGHT | 1 Inch
SIZE RUN | 35-42

HIGHLIGHTS

- APMA accepted
- Patented removable footbed; replacement available in medium and wide (ALG-999 footbed)
- Hand-stitched
- Leather upper and lining
- Adjustable hook-and-loop closure
- Suede leather footbed

VICTORIAH



Casual meets regal. The Victoriah is the perfect slide sandal to glamorize any summer outfit. Sumptuous patterns and complementary metallic hardware create an intricate look. An adjustable strap with a crisscross design over the vamp is paired with our slimmer Mini outsole.



VIC-479
VERANDA



VIC-7719
5TH DIMENSION



VIC-7755
BLACK PATENT



VIC-7756
EXOTIC



MATERIAL | Leather upper and lining
OUTSOLE | Mini Outsole
HEEL HEIGHT | 1 Inch
SIZE RUN | 35–42

HIGHLIGHTS

- APMA accepted
- Patented removable footbed; replacement available in medium and wide (ALG-999 footbed)
- Hand-stitched
- Adjustable hook-and-loop strap
- Suede leather footbed

VIOLETTE



The Violette slide is hand-stitched onto our Mini outsole. It has a leather upper and lining with two adjustable hook-and-loop closures for a snug fit. The patented removable footbed easily converts to medium or wide widths.



VIO-168
SEASCAPE



VIO-721
SEW COOL BLACK



VIO-7701
RUSTIC



VIO-7715
IVY



VIO-7745
DIVERSIFIED



VIO-7757
SWIRLY CURLY



MATERIAL | Leather upper and lining
OUTSOLE | Mini Outsole
HEEL HEIGHT | 1 Inch
SIZE RUN | 35–44

HIGHLIGHTS

- APMA accepted
- Patented removable footbed; replacement available in medium and wide (ALG-999 footbed)
- Hand-stitched
- Two adjustable hook-and-loop closures
- Suede leather footbed



VERONA

The Verona is on our Mini outsole and is paired with our patented footbed for a truly comfortable fit. This sling back sandal offers three adjustable closures to accommodate your feet perfectly. Vivid prints make the Verona a true statement piece.



VER-7758
ENGRAVER WHITE



VER-7759
ENGRAVER COGNAC



VER-7760
ENGRAVER BLACK



- MATERIAL** | Leather upper and lining
OUTSOLE | Mini Outsole
HEEL HEIGHT | 1 Inch
SIZE RUN | 35–42
HIGHLIGHTS | • APMA accepted
 • Patented removable footbed; replacement available in medium and wide (ALG-999 footbed)
 • Hand-stitched
 • Three adjustable hook-and-loop closures
 • Suede leather footbed



VALERIE

The Valerie is a gladiator-inspired sandal our Mini outsole, designed to mimic a natural rocking motion for improved pressure distribution across the bottom of the foot. It has a leather upper and lining, with adjustable laces beautifully adorned with tassel end-caps. The patented footbed is ergonomically designed to conform the natural contour of the foot, working to relieve legs, hip and back from long standing hours.



VAL-611
BLACK BURNISH



VAL-7716
SOUTHWESTERN
ROMANCE



VAL-7762
SAND



- NEW STYLE**
- MATERIAL** | Leather upper and lining
OUTSOLE | Mini Outsole
HEEL HEIGHT | 1 Inch
SIZE RUN | 35–42
HIGHLIGHTS | • APMA accepted
 • Patented removable footbed; replacement available in medium and wide (ALG-999 footbed)
 • Hand-stitched
 • Adjustable laces
 • Suede leather footbed

VIENNA



An essential everyday sling back sandal on our Mini outsole, the Vienna features beautifully designed leather uppers and metallic hardware, with two adjustable hook-and-loop straps that allow you to perfectly customize the fit.



VIE-123
SMOKE



VIE-461
MORNING GLORY BLACK



VIE-462
MORNING GLORY TAN



VIE-463
SAND



VIE-7703
SAVAGE



VIE-7705
BROOCH



VIE-7717
NET NEUTRALITY



VIE-7761
SMOLDER



MATERIAL | Leather upper and lining
OUTSOLE | Mini Outsole
HEEL HEIGHT | 1 Inch
SIZE RUN | 35–44

HIGHLIGHTS

- APMA accepted
- Patented removable footbed; replacement available in medium and wide (ALG-999 footbed)
- Hand-stitched
- Two adjustable hook-and-loop straps
- Suede leather footbed

LAYAH



The Layah thong sandal is on the featherweight, slip-resistant Comfort Flat Outsole. The sandal features an adjustable hook-and-loop closure ornamented with an eye-catching hardware detail. The durable microsuede footbed is soft against the feet and offers ample arch support for all day comfort.



LAY-462
TAN



LAY-600
WHITE



LAY-601
BLACK

NEW STYLE

MATERIAL | Vegan leather upper
OUTSOLE | Comfort Flat
HEEL HEIGHT | ½ Inch
SIZE RUN | 35–42 (medium width only)

HIGHLIGHTS

- Adjustable hook-and-loop closure
- Durable microsuede footbed
- Featherweight slip-resistant outsole

LANIE



The Lanie thong sandal is on the featherweight, slip-resistant Comfort Flat Outsole. The sandal features an adjustable hook-and-loop closure with an O-ring hardware detail. The durable microsuede footbed is soft against the feet and offers ample arch support for all day comfort.



LAN-600
WHITE



LAN-601
BLACK



LAN-623
RED



LAN-644
TAWNY

NEW STYLE

- MATERIAL** | Vegan leather upper
- OUTSOLE** | Comfort Flat
- HEEL HEIGHT** | ½ Inch
- SIZE RUN** | 35–42 (medium width only)
- HIGHLIGHTS** |
 - Adjustable hook-and-loop closure
 - Durable microsuede footbed
 - Featherweight slip-resistant outsole

LEAH



The Leah sandal is on the featherweight, slip-resistant Comfort Flat Outsole. The sandal features two adjustable hook-and-loop straps for a customizable fit, and an elastic back strap for easy on-and-off wear. The durable microsuede footbed is soft against the feet and offers ample arch support for all day comfort.



LEA-601
BLACK



LEA-7762
SANDS



LEA-7763
SMOKE

NEW STYLE

- MATERIAL** | Vegan leather upper
- OUTSOLE** | Comfort Flat
- HEEL HEIGHT** | ½ Inch
- SIZE RUN** | 35–42 (medium width only)
- HIGHLIGHTS** |
 - Two adjustable hook-and-loop closures
 - Elastic back strap for easy in-and-out
 - Durable microsuede footbed
 - Featherweight slip-resistant outsole

LUCIA



The Lucia sandal is on the featherweight, slip-resistant Comfort Flat Outsole. The sandal features an adjustable hook-and-loop closure for a customizable fit, and two elastic straps across the ankle for easy on-and-off wear. The durable microsuede footbed is soft against the feet and offers ample arch support for all day comfort.



LUC-601
BLACK



LUC-7764
RED



LUC-7765
AQUA

NEW STYLE

- MATERIAL** | Vegan leather upper
- OUTSOLE** | Comfort Flat
- HEEL HEIGHT** | ½ Inch
- SIZE RUN** | 35–42 (medium width only)
- HIGHLIGHTS** |
 - Adjustable hook-and-loop closure
 - Elastic cross-strap for easy in-and-out
 - Durable microsuede footbed
 - Featherweight slip-resistant outsole

ROZ



Fashionista alert! This new platform sandal is made for your next vacation. Braided with a textile upper, this t-strap sandal has all the chic boho appeal your summer outfits are looking for.



ROZ-951
GET AWAY BLACK



ROZ-952
GET AWAY TAN



ROZ-7766
ITCHYCOO RED



ROZ-7767
ITCHYCOO PURPLE

- MATERIAL** | Braided vegan textile upper with adjustable hardware
- OUTSOLE** | Heritage Outsole
- HEEL HEIGHT** | 1½ Inch
- SIZE RUN** | 35–42 (medium width only)
- HIGHLIGHTS** |
 - Elastic back strap for easy in-and-out
 - Non-removable molded polyurethane insole
 - Polyurethane outsole

HENNA



The Henna is a perfectly fun and flattering platform vegan sandal addition to your summer wardrobe. Three adjustable hook-and-loop straps allow for a customized, secured fit. Contour molded footbed offers ample arch support for all day activity.



HEN-600
WHITE



HEN-601
BLACK



HEN-7768
ITCHYCOO GREY



HEN-7769
ITCHYCOO

NEW STYLE

- MATERIAL** | Vegan leather upper
- OUTSOLE** | Heritage Outsole
- HEEL HEIGHT** | 1½ Inch
- SIZE RUN** | 35–42 (medium width only)
- HIGHLIGHTS** |
 - Three adjustable hook-and-loop closures
 - Non-removable molded polyurethane insole
 - Polyurethane outsole

HARLIE



The Harlie is the perfect summer wardrobe companion to complete any outfit. This vegan platform sandal offers added height without compromising comfort. The contour molded footbed offers ample all-day arch support. Adjustable hook-and-loop strap and elastic back strap allow for easy on-and-off. Simple hardware adds a subtle feminine accent.



HAR-601
BLACK



HAR-668
SAGE



HAR-7731
BONE



HAR-7939
MUSTARD

NEW STYLE

- MATERIAL** | Vegan leather upper
- OUTSOLE** | Heritage Outsole
- HEEL HEIGHT** | 1½ Inch
- SIZE RUN** | 35–42 (medium width only)
- HIGHLIGHTS** |
 - Adjustable hook-and-loop closure
 - Elastic back strap for easy in-and-out
 - Non-removable molded polyurethane insole
 - Polyurethane outsole

TAMSYN



Tamsyn is a new lightweight Comfort Flatform wedge that offers height and stability. The footbed has all the comfort and support of our signature footbed and is wrapped in soft, durable microsuede. The two adjustable hook-and-loop closures keep you secure while wearing the Tamsyn.

NEW



TAM-462
TAN

NEW



TAM-668
SAGE

NEW



TAM-7772
BLACK

MATERIAL | Vegan leather upper
OUTSOLE | Comfort Flatform
HEEL HEIGHT | 2¼ Inch
SIZE RUN | 35–42 (medium width only)

HIGHLIGHTS

- Two adjustable hook-and-loop closures
- Durable microsuede footbed
- Lightweight polyurethane outsole

TOVA



Tova is a new lightweight Comfort Flatform wedge sandal that offers height and stability to elevate and complement every outfit. Supple suede leather is soft and luxurious against the foot. The footbed offers the comfort and support of Alegria's signature footbed, wrapped in durable microsuede. Adjustable hook-and-loop tab closure allows for easy in-and-out.



TOV-601
BLACK



TOV-680
SAND



TOV-7764
COGNAC & ROSES

NEW STYLE

MATERIAL | Suede leather upper and lining
OUTSOLE | Comfort Flatform
HEEL HEIGHT | 2¼ Inch
SIZE RUN | 35–42 (medium width only)

HIGHLIGHTS

- Adjustable hook-and-loop closure
- Durable microsuede footbed
- Lightweight polyurethane outsole



TARAH



ODE

*A sling-back makes this comfort wedge new again. Use the two adjustable hook-and-loop straps for a secure fit.
Be comfy and stay cool in these stylish sling-backs all season long.*



TAR-611
BLACK CASUAL



TAR-647
COGNAC



TAR-7804
KINDRED

MATERIAL | Leather upper
OUTSOLE | Comfort Wedge
HEEL HEIGHT | 2 Inch
SIZE RUN | 35–42

HIGHLIGHTS

- Medium width only
- Two adjustable hook-and-loop closures
- Stain-resistant upper
- Exposed suede leather footbed
- Slip-resistant outsole
- Non-marking outsole



ODE-166
COUNTRY ROAD



ODE-194
CASUAL FRIDAY



ODE-520
TOBACCO SMOKE



ODE-763
SPRINKLES



ODE-601
BLACK



ODE-849
TOBACCO LEAF



ODE-879
STRIPES



ODE-5648
WILD FLOWER

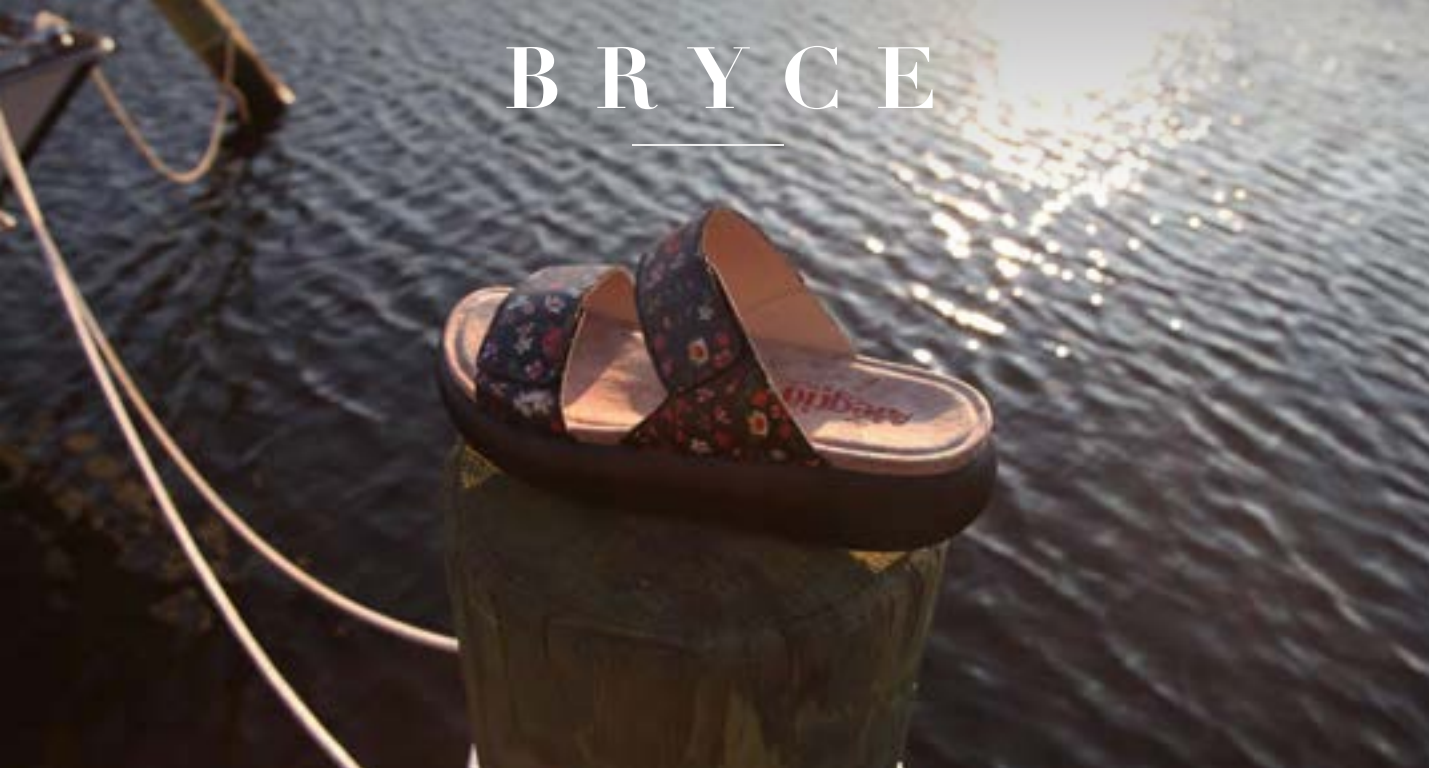
NEW STYLE

MATERIAL | EVA
OUTSOLE | Recovery Outsole
HEEL HEIGHT | 1 Inch
SIZE RUN | 35–42 (medium width only)

HIGHLIGHTS

- One-piece lightweight EVA thong sandal
- Built-in molded arch support
- 3D sublimation printing
- Rocker outsole to promote balanced pressure distribution

BRYCE



The Bryce is a cute slide made to mimic the rocking motion of our Classic Rocker outsole but with a more streamlined look for all day comfort. The two hook-and-loop closures keep your feet secure while you walk and the non-flexing rocker bottom takes the pressure off of problem areas.



BRY-601
BLACK

NEW



BRY-7763
MONTAGE

NEW



BRY-7764
COGNAC & ROSES

NEW



BRY-7804
KINDRED

MATERIAL | Leather upper and lining
OUTSOLE | Sleek Rocker
HEEL HEIGHT | 1½ Inch
SIZE RUN | 35–42 (medium width only)

HIGHLIGHTS

- Two adjustable hook-and-loop closures
- Durable microsuede footbed
- Built-in arch support in the insole and outsole
- Non-flexing rocker bottom
- Slip-resistant outsole
- Non-marking outsole

BAILEE



Comfort and fashion are key while wearing the Bailee, made to mimic the rocking motion of our Classic Rocker outsole but with a sleeker look. Three adjustable hook-and-loop straps keep you secure while the soft microsuede footbed keeps your feet comfy.



BAI-601
BLACK



BAI-602
LUGGAGE

NEW



BAI-7716
SOUTHWESTERN
ROMANCE

NEW



BAI-7765
PEWTER STREAK

NEW



BAI-7826
GLAMMO

MATERIAL | Leather upper and lining
OUTSOLE | Sleek Rocker
HEEL HEIGHT | 1½ Inch
SIZE RUN | 35–42 (medium width only)

HIGHLIGHTS

- Three adjustable hook-and-loop closures
- Durable microsuede footbed
- Built-in arch support in the insole and outsole
- Non-flexing rocker bottom
- Slip-resistant outsole
- Non-marking outsole

BEATRIX



Comfort and fashion are key while wearing the Beatrix, made to mimic the rocking motion of our Classic Rocker outsole but with a more streamlined look. This lightweight non-flexing rocker outsole has built-in arch-support, and takes the pressure off of problem areas for lasting all-day comfort. Two adjustable hook-and-loop straps keep you secure while the soft microsuede footbed keeps your feet comfy.



BEA-601
BLACK



BEA-7731
BONE



BEA-7826
GLAMMO

NEW STYLE

- MATERIAL** | Leather upper and lining
- OUTSOLE** | Sleek Rocker
- HEEL HEIGHT** | 1½ Inch
- SIZE RUN** | 35–42 (medium width only)
- HIGHLIGHTS** |
 - Two adjustable hook-and-loop closures
 - Durable microsuede footbed
 - Built-in arch support in the insole and outsole
 - Non-flexing rocker outsole
 - Slip-resistant outsole
 - Non-marking outsole

EVIE



Evie is a full coverage slip-on featuring an elastic cross-strap that offers a secured fit without the hassle of laces or closures. Combined with the Dream Fit™ neoprene upper, the shoe is soft against the skin and accommodating across the foot. The outsole is made to mimic the rocking motion of our Classic Rocker outsole, but with a more streamlined look. This lightweight non-flexing rocker outsole has built-in arch-support, and takes the pressure off of problem areas for lasting all-day comfort.



EVI-402
LEOPARD



EVI-601
BLACK

NEW STYLE

- MATERIAL** | Dream Fit™ upper
- OUTSOLE** | Sleek Rocker
- HEEL HEIGHT** | 1½ Inch
- SIZE RUN** | 35–42 (medium width only)

HIGHLIGHTS

- Removable footbed; medium width only
- Padded collar
- Inside padded heel counter
- Protective vegan leather counter
- Removable jersey wrapped footbed
- Durable elastic bands for easy in-and-out
- Built-in arch support in the insole and outsole
- Non-flexing rocker bottom
- Slip-resistant outsole
- Non-marking outsole

EDEN



The Eden features a breathable Dream Fit™ upper and a lightweight non-flexing rocker bottom that takes the pressure off of problem areas. It also has a padded heel counter for a secure fit and added comfort.



EDE-101
BLACK



EDE-402
LEOPARD



EDE-406
WHITE LEOPARD



EDE-671
BEAUTY BLUR



EDE-7704
FRIDA
**Hand Drawn*



EDE-7726
SNAKE



EDE-7727
BRANDY



EDE-7859
ITS BLISS



EDE-7860
BLACK FLOW



EDE-7861
ASH FLOW

MATERIAL | Dream Fit™ upper
OUTSOLE | Sleek Rocker
HEEL HEIGHT | 1½ Inch
SIZE RUN | 35–42

HIGHLIGHTS

- Pull tab for easy on-and-off
- Inside padded heel counter
- Protective vegan leather counter
- Removable jersey wrapped footbed
- Built-in arch support in the insole and outsole
- Non-flexing rocker outsole
- Slip-resistant outsole
- Non-marking outsole

OLIVIA



Olivia is a lightweight style with a knitted textile upper. It features a padded collar, removable footbed, and the non-flexing rocker bottom takes the pressure off of problem areas for lasting comfort.

NEW



OLI-7728
SILVER

NEW



OLI-7730
BLACK MULTI

MATERIAL | Dream Fit™ knit upper
OUTSOLE | Sleek Rocker
HEEL HEIGHT | 1½ Inch
SIZE RUN | 35–42

HIGHLIGHTS

- Adjustable hook-and-loop closure
- Protective vegan leather counter
- Removable jersey wrapped footbed
- Built-in arch support in the insole and outsole
- Non-flexing rocker outsole
- Slip-resistant outsole
- Non-marking outsole

ELLY



The Elly is an adorable slip-on with double elastic gores for easy on-and-off. The Sleek Rocker bottom is made to mimic the rocking motion of our Classic Rocker Outsole but with a more streamlined look.



ELL-7872
MAGICAL



ELL-7873
BLACK SOFTIE



ELL-7874
WHITE SOFTIE



ELL-7875
PEWTER FIELDS



ELL-7876
PLUM FIELDS



ELL-7877
AZURE FIELDS

MATERIAL | Vegan leather upper with textile lining
OUTSOLE | Sleek Rocker
HEEL HEIGHT | 1½ Inch
SIZE RUN | 35–42

HIGHLIGHTS

- Removable footbed; medium width only
- Double elastic gores
- Padded collar
- Printed jersey fabric footbed
- Non-flexing rocker outsole with built-in arch support
- Slip-resistant outsole
- Non-marking outsole

CLASSIC



Work or play, the Classic slip-resistant clog is packed with maximum comfort for whatever your day brings. Its patented removable footbed easily converts to medium or wide width to accommodate most anyone.



ALG-161
UPGRADE



ALG-163
HELLO DOILY



ALG-420
CULTIVATE



NEW

ALG-7700
ZANEY JANEY



NEW

ALG-7701
RUSTIC



NEW

ALG-7702
SCORE



NEW

ALG-7703
SAVAGE



NEW

ALG-7704
FRIDA
**Hand Drawn*



ALG-7801
CROCO



ALG-7802
GROOVIN



ALG-7803
KATS

**Hand Drawn*



ALG-7804
KINDRED



ALG-7805
LEAFER



- MATERIAL** | Leather upper and lining
- OUTSOLE** | Classic Rocker
- HEEL HEIGHT** | 1¾ Inch
- SIZE RUN** | 35–42
- HIGHLIGHTS** |
 - APMA accepted
 - Patented removable footbed; replacement available in medium and wide (ALG-999 footbed)
 - Hand-stitched
 - Stain-resistant upper
 - Adjustable side buckle
 - Suede leather footbed
 - Slip-resistant outsole
 - Non-marking outsole



PAL-459
MINNOW RAINBOW



PAL-504
LOTUS



PAL-531
BLACK EMBOSSED ROSE



PAL-601
BLACK NAPPA



PAL-7705
BROOCH



PAL-7706
WOODLAND WONDERS



PAL-7707
SPRINGER



PAL-7806
GRAND



PAL-7807
LUCIDITY



PAL-7808
PURPLE HAZE



PAL-7809
RED ROCK



- MATERIAL** | Leather upper and lining
OUTSOLE | Classic Rocker
HEEL HEIGHT | 1¾ Inch
SIZE RUN | 35–44
HIGHLIGHTS |
- APMA accepted
 - Patented removable footbed; replacement available in medium and wide (ALG-999 footbed)
 - Hand-stitched
 - Adjustable hook-and-loop closure with hardware
 - Stain-resistant upper
 - Padded collar
 - Suede leather footbed
 - Slip-resistant outsole
 - Non-marking outsole

PALOMA



This easy-wear Mary Jane is beautifully adorned with unique hardware and unlike any you have worn before. An adjustable hook-and-loop closure and a slip-resistant outsole allows for confidence in every step.

DEBRA



Slip on the Debra with ease — double elastic gores allow this closed-heel clog to fit you perfectly.

Show off your style with a variety of unique prints.



MATERIAL	Leather upper and lining
OUTSOLE	Classic Rocker
HEEL HEIGHT	1¾ Inch
SIZE RUN	35–44
HIGHLIGHTS	<ul style="list-style-type: none"> • APMA accepted • Patented removable footbed; replacement available in medium and wide (ALG-999 footbed) • Hand-stitched • Double elastic gores • Stain-resistant upper • Padded collar • Suede leather footbed • Slip-resistant outsole • Non-marking outsole



DEB-380
REVERIE



DEB-484
SUGAR SKULLS
**Exclusive Print*



DEB-531
BLACK EMBOSSED
ROSE



DEB-601
BLACK NAPPA



DEB-7701
RUSTIC



DEB-7702
SCORE



DEB-7706
WOODLAND
WONDERS



DEB-7708
ALOHA BLACK
**Hand Drawn*



DEB-7709
ALOHA WHITE
**Hand Drawn*



DEB-7710
LULLABY
**Hand Drawn*



DEB-7711
WILDIN



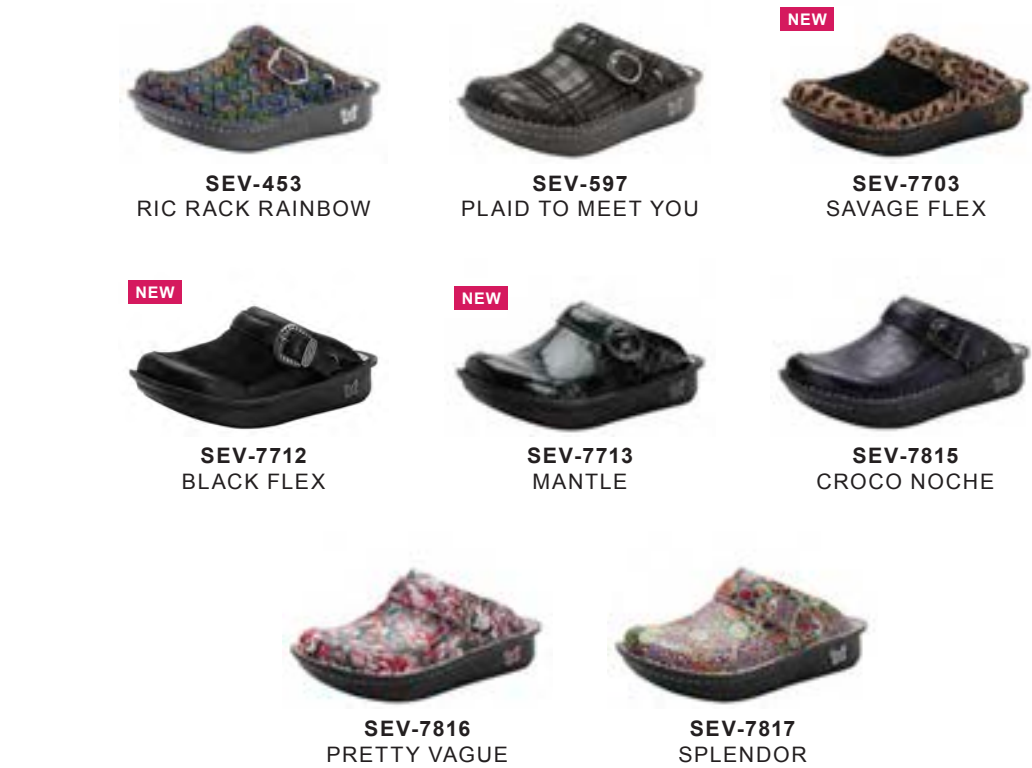
DEB-7810
ELECTRIFIED



DEB-7811
FRESH BAKED
**Hand Drawn*



DEB-7814
RIPPLE



MATERIAL | Leather upper and lining
OUTSOLE | Classic Rocker
HEEL HEIGHT | 1¾ Inch
SIZE RUN | 35–42

- HIGHLIGHTS**
- APMA accepted
 - Patented removable footbed; replacement available in medium and wide (ALG-999 footbed)
 - Hand-stitched
 - Swivel strap with adjustable buckle; can be worn as backless clog or sling-back
 - Stain-resistant upper
 - Padded collar
 - Suede leather footbed
 - Slip-resistant outsole
 - Non-marking outsole

SEVILLE



*Wear this versatile clog two different ways — easily slip the Seville on, or swing the strap around for a more secure fit.
 Complete with slip-resistant Classic Rocker outsole.*

DELIAH



The Deliah is a fashionable new slip-on that provides a secure fit with its adjustable hook-and-loop closure. Suitable for casual wear and perfect for everyday outings for its ability to provide comfort and support.



DEI-161
UPGRADE



DEL-7714
OILED BROWN



DEL-7715
IVY



- MATERIAL** | Leather upper and lining
OUTSOLE | Classic Rocker
HEEL HEIGHT | 1¾ Inch
SIZE RUN | 35-42
HIGHLIGHTS |
- APMA accepted
 - Patented removable footbed; replacement available in medium and wide (ALG-999 footbed)
 - Hand-stitched
 - Adjustable hook-and-loop closure with hardware
 - Stain-resistant upper
 - Padded collar
 - Suede leather footbed
 - Slip-resistant outsole
 - Non-marking outsole

BELLE



The hand-stitched Belle is a casual Mary Jane style made with genuine leather on our lightweight Mini Outsole. The Belle offers two adjustable hook-and-loop closures and a variety of patterns.



BEL-161
UPGRADE



BEL-7716
SOUTHWESTERN
ROMANCE



BEL-7717
NET NEUTRALITY



BEL-7804
KINDRED



BEL-7826
GLAMMO



BEL-7828
WILDER

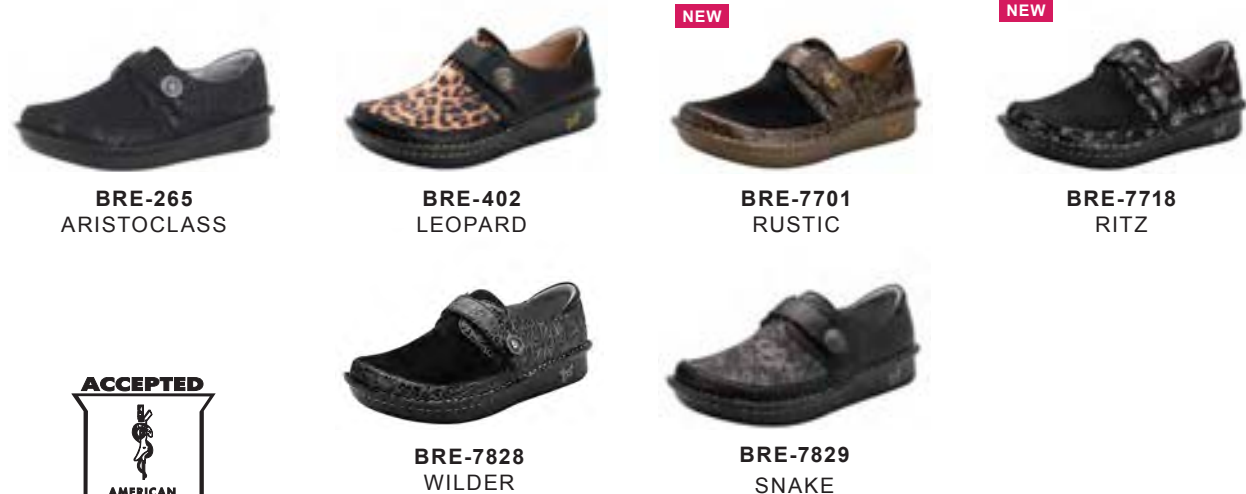


- MATERIAL** | Leather upper and lining
OUTSOLE | Mini Outsole
HEEL HEIGHT | 1 Inch
SIZE RUN | 35-42
HIGHLIGHTS |
- APMA accepted
 - Patented removable footbed; replacement available in medium and wide (ALG-999 footbed)
 - Hand-stitched
 - Two adjustable hook-and-loop closures
 - Suede leather footbed

BRENN A



The Brenna on the Mini Outsole features our Dream Fit™ design in a timeless style. Strut securely in this full-coverage slip-on with its adjustable hook-and-loop closure, complete with adorning hardware.



MATERIAL | Dream Fit™ leather upper and lining
OUTSOLE | Mini Outsole
HEEL HEIGHT | 1 Inch
SIZE RUN | 35–42

HIGHLIGHTS

- APMA accepted
- Patented removable footbed; replacement available in medium and wide (ALG-999 footbed)
- Hand-stitched
- Adjustable hook-and-loop closure with hardware
- Padded collar
- Suede leather footbed

BROOK



The Brook is our newest full-coverage slip-on style on the Mini Outsole made to give you lasting comfort throughout your day. The leather hand-stitched upper and double elastic gores will provide all day comfort and a secure fit.



MATERIAL | Leather upper and lining
 Dream Fit™ upper and lining (select styles)
OUTSOLE | Mini Outsole
HEEL HEIGHT | 1 Inch
SIZE RUN | 35–42

HIGHLIGHTS

- APMA accepted
- Patented removable footbed; replacement available in medium and wide (ALG-999 footbed)
- Hand-stitched
- Double elastic gores
- Padded collar
- Suede leather footbed

KELI



Slip on and be comfortable all day long. Professional, but never boring, the Keli has vibrant colors and prints to choose from to allow a unique expression of your personality.



- MATERIAL** | Leather upper and lining
Patent upper and leather lining (select styles)
- OUTSOLE** | Career Casual
- HEEL HEIGHT** | 1¼ Inch
- SIZE RUN** | 35–44
- HIGHLIGHTS** |
- APMA accepted
 - Removable footbed; replacement available in medium and wide (ALG-999 footbed)
 - Stain-resistant upper
 - Double elastic gores
 - Padded collar
 - Suede leather footbed
 - Slip-resistant outsole
 - Non-marking outsole

NEW



KEL-161
UPGRADE



KEL-193
DERMATIC



KEL-274
FLUTTER BLACK



KEL-402
LEOPARD



KEL-431
BLACK EMBOSSED
PAISLEY



KEL-459
MINNOW RAINBOW



KEL-597
PLAID TO MEET YOU



KEL-601
BLACK NAPPA



KEL-6201
OILED BROWN



NEW

KEL-7704
FRIDA
**Hand Drawn*



NEW

KEL-7710
LULLABY
**Hand Drawn*



NEW

KEL-7713
MANTLE



NEW

KEL-7716
SOUTHWESTERN
ROMANCE



NEW

KEL-7719
5TH DIMENSION



NEW

KEL-7720
BUTTERFLY
**Hand Drawn*



NEW

KEL-7721
FAN FLARE



KEL-7815
CROCO NOCHE



KEL-7823
DELIGHTFUL



KEL-7838
BIG FUN



KEL-7841
FRESH BAKED WHITE
**Hand Drawn*



KEL-7844
CHERRY BOMB
PATENT



KEL-7845
SLICKERY PATENT

KAYLA



Slip on this clog and experience the comfort of our Career Casual Outsole and Classic Footbed. Kayla also features a padded collar and stain-resistant, genuine leather upper.



KAY-161
UPGRADE



KAY-601
BLACK NAPPA



KAY-674
GIRLIE GIRL

NEW



KAY-7702
SCORE

NEW



KAY-7706
WOODLAND WONDERS



KAY-7847
SPLASHY



MATERIAL | Leather upper and lining
OUTSOLE | Career Casual
HEEL HEIGHT | 1¼ Inch
SIZE RUN | 35–42

HIGHLIGHTS

- APMA accepted
- Removable footbed; replacement available in medium and wide (ALG-999 footbed)
- Inside elastic gore
- Stain-resistant upper
- Padded collar
- Suede leather footbed
- Slip-resistant outsole
- Non-marking outsole

JOLEEN



The Joleen features a unique hardware that doubles as an adjustable hook-and-loop strap with a padded collar that allows for the perfect fit.



JOL-161
UPGRADE



JOL-262
NAVY SWISH

NEW



JOL-275
FLUTTER CHOCO



JOL-422
MOLASSES TOOLED



JOL-429
TAR TOOLED



MATERIAL | Leather upper and lining
OUTSOLE | Career Casual
HEEL HEIGHT | 1¼ Inch
SIZE RUN | 35–44

HIGHLIGHTS

- APMA accepted
- Removable footbed; replacement available in medium and wide (ALG-999 footbed)
- Adjustable hook-and-loop closure with hardware
- Stain-resistant upper
- Padded collar
- Suede leather footbed
- Slip-resistant outsole
- Non-marking outsole

DUETTE



The Duette is a slip-on shoe on a dual density outsole that gives you a more balanced weight distribution, and better rebound and bounce when in motion. Featuring a padded collar, double elastic gores for enhanced comfort, and removable footbed, the Duette promises all-day comfort.



- MATERIAL** | Vegan leather upper with textile lining
- OUTSOLE** | Sport Rocker
- HEEL HEIGHT** | 1 Inch
- SIZE RUN** | 35–43
- HIGHLIGHTS** |
 - Removable footbed
 - Wide width sizes available on select colors
 - Double elastic gores
 - Padded collar
 - Dual-density polyurethane outsole
 - Slip-resistant outsole
 - Non-marking outsole

ALCHEMIE



Slip on the Alchemie and enjoy the luxurious comfort that is our Dream Fit™ upper. The ultra-flexible outsole is lightweight and responsive when in motion, while the footbed offers lasting arch support. Whether in solids or print, this shoe will be perfect for any leisurely setting.



ALC-601
BLACK



ALC-7734
BLUE BOUQUET



ALC-7735
BLACK BOUQUET

NEW STYLE

MATERIAL | Dream Fit™ upper and mesh lining
OUTSOLE | Essence
HEEL HEIGHT | 1 Inch
SIZE RUN | 35–42 (medium width only)

HIGHLIGHTS

- Removable footbed
- Protective vegan leather counter
- Double elastic gores
- Pull tab for easy on-and-off
- Slip-resistant outsole
- Non-marking outsole

S E R E N I T I



The Sereniti offers the timeless look of a traditional clog, complete with enhanced arch support for all day comfort. The subtle wedge gives added height without pressure on the balls of the feet. Rich supple leather enhances the overall aesthetics, allowing this shoe to transition seamlessly from work to leisure. The removable jersey-wrapped footbed adds an eye-popping detail.



SER-7737
AGED POPPY



SER-7738
AGED JADE



SER-7739
AGED COGNAC



SER-7741
OBSIDIAN

NEW STYLE

MATERIAL | Leather upper and lining
OUTSOLE | Wood Look Wedge
HEEL HEIGHT | 2 Inch
SIZE RUN | 35–42 (medium width only)

HIGHLIGHTS

- Double elastic gores
- Removable jersey wrapped footbed
- Slip-resistant featherweight outsole
- Non-marking outsole

C E L E S T E



The Celeste is a classic Mary Jane on our Wood Look Wedge Outsole, complete with enhanced arch support for all day comfort. The subtle wedge gives added height without adding pressure on the balls of the feet. Rich supple leather enhances the overall aesthetics, allowing this shoe to transition seamlessly from work to leisure. The removable jersey-wrapped footbed adds an eye-popping detail.



CEL-7736
AGED BONE



CEL-7737
AGED POPPY



CEL-7741
OBSIDIAN

NEW STYLE

MATERIAL | Leather upper and lining
OUTSOLE | Wood Look Wedge
HEEL HEIGHT | 2 Inch
SIZE RUN | 35–42 (medium width only)

HIGHLIGHTS

- Adjustable hook-and-loop closure with hardware
- Removable jersey wrapped footbed
- Padded collar
- Slip-resistant featherweight outsole
- Non-marking outsole

SUMMER



The Summer is a wedge sandal featuring an adjustable T-strap hook-and-loop closure on our Wood Look Wedge Outsole. The wedge gives added height without adding pressure on the balls of the feet. The colorful print on the exposed, durable, jersey-wrapped footbed adds a playful eye-catching detail, and provides enhanced arch support for all day comfort.



SUM-601
BLACK



SUM-623
RED



SUM-647
COGNAC

NEW STYLE

MATERIAL | Leather upper and lining
OUTSOLE | Wood Look Wedge
HEEL HEIGHT | 2 Inch
SIZE RUN | 35–42 (medium width only)

HIGHLIGHTS

- Adjustable hook-and-loop closure
- Durable jersey wrapped footbed
- Slip-resistant featherweight outsole
- Non-marking outsole

ROSIE



The Rosie combines both form and function – it is a fashionable peep-toe wedge sandal, constructed with ample arch support for lasting comfort. The sandal gives added height without pressure on the balls of the feet. The wedge also features our Dream Fit™ upper, a stretch suede and/or neoprene upper that is soft and accommodating. The adjustable hook-and-loop back strap allows for a customized fit that is unique to every wearer.



ROS-402
LEOPARD



ROS-601
BLACK



ROS-7770
TAN SUEDE



ROS-7771
BLACK SUEDE

NEW STYLE

MATERIAL | Dream Fit™ upper (select styles)
 Suede upper (select styles)
OUTSOLE | Comfort Wedge
HEEL HEIGHT | 2 Inch
SIZE RUN | 35–42 (medium width only)

HIGHLIGHTS

- Adjustable leather hook-and-loop closure
- Durable microsuede footbed
- Slip-resistant outsole
- Non-marking outsole

CHARLETTE

- Removable footbed; medium width only
- Double zippers
- Suede leather footbed
- Slip-resistant outsole
- Non-marking outsole

MATERIAL | Leather upper and lining
OUTSOLE | Lug
HEEL HEIGHT | 1¾ Inch heel height
SHAFT HEIGHT | 6 Inch
CIRCUMFERENCE | 14 Inch
SIZE RUN | 35–42



CHA-101CH
CRAZYHORSE BLACK



CHA-102CH
CRAZYHORSE BROWN



CHA-7927
COGNAC & ROSES



CHA-7928
GOTH YOU'RE COOL

CHERI

- Removable footbed; medium width only
- Adjustable laces
- Pull tab for easy on-and-off
- Water-resistant upper
- Protective vegan leather mud guard and counter
- Slip-resistant outsole
- Non-marking outsole
- Warm lining in select colors

MATERIAL | Vegan leather upper with textile lining
OUTSOLE | Lug
HEEL HEIGHT | 1¾ Inch
SHAFT HEIGHT | 4 Inch
CIRCUMFERENCE | 13 Inch
SIZE RUN | 35–42



CHR-601
SMOOTH BLACK



CHR-602
SMOOTH BROWN



CHR-7857
BLACK



CHR-7939
MUSTARD



CHR-7940
KETCHUP

CHERYL

- Removable footbed; medium width only
- Adjustable laces
- Padded collar
- Suede leather footbed
- Slip-resistant outsole
- Non-marking outsole

MATERIAL | Leather upper and lining
OUTSOLE | Lug
HEEL HEIGHT | 1¾ inch
SIZE RUN | 35–42



CHE-601
BLACK

SHAYNE

- Removable footbed; medium width only
- Inside zipper and elastic gore
- Suede leather footbed
- Slip-resistant outsole
- Non-marking outsole

MATERIAL | Leather upper and lining
OUTSOLE | Lug
HEEL HEIGHT | 1¾ Inch heel
SHAFT HEIGHT | 3½ Inch
CIRCUMFERENCE | 13 Inch
SIZE RUN | 35–42



SHA-184
BRONZE SWISH



SHA-601
BLACK



SHA-7824
COCOA IMPRESSIONS



SHA-7825
INK IMPRESSIONS

ERYN

- Removable footbed; replacement available in medium and wide (ALG-998 footbed)
- Double elastic gores
- Padded collar
- Suede leather footbed
- Slip-resistant outsole
- Non-marking outsole

MATERIAL | Leather upper and lining
OUTSOLE | Career Fashion Wedge
HEEL HEIGHT | 2 Inch
SIZE RUN | 35–42



ERY-161
UPGRADE

STEEVE

- Removable footbed; replacement available in medium and wide (ALG-998 footbed)
- Inside zipper
- Adjustable back lace detail
- Suede leather footbed
- Slip-resistant outsole
- Non-marking outsole

MATERIAL | Leather upper and lining
OUTSOLE | Career Fashion Wedge
HEEL HEIGHT | 2 Inch
SHAFT HEIGHT | 4½ Inch
CIRCUMFERENCE | 13 Inch
SIZE RUN | 35–42



STE-598
ROCKNROLLA



STE-795
CUTE STUFF INK



STE-7925
PLAIDLY BROWN



STE-7926
PLAIDLY BLACK



SLOAN

- Removable footbed; replacement available in medium and wide (ALG-998 footbed)
- Double zippers
- Padded collar
- Suede leather footbed
- Protective vegan leather counter
- Slip-resistant outsole
- Non-marking outsole

MATERIAL | Dream Fit™ upper and lining
OUTSOLE | Career Fashion Wedge
HEEL HEIGHT | 2 Inch
SHAFT HEIGHT | 3¼ Inch
CIRCUMFERENCE | 13 Inch
SIZE RUN | 35–42



SLO-402
LEOPARD



SLO-601
BLACK



SLO-7829
SNAKE



SLO-7922
BLACK SUEDE



SLO-7923
BROWN SUEDE

KHLOE

- APMA accepted
- Patented removable footbed; replacement available in medium and wide (ALG-999 footbed)
- Adjustable hook-and-loop closure
- Stain-resistant upper
- Padded collar
- Suede leather footbed
- Slip-resistant outsole
- Non-marking outsole

MATERIAL | Leather upper and lining
OUTSOLE | Career Casual
HEEL HEIGHT | 1¼ Inch
SIZE RUN | 35–42



KHL-601
BLACK NAPPA



KOURTNEY

- APMA accepted
- Patented removable footbed; replacement available in medium and wide (ALG-999 footbed)
- Adjustable hook-and-loop closure
- Stain-resistant upper
- Padded collar
- Suede leather footbed
- Slip-resistant outsole
- Non-marking outsole

MATERIAL | Leather upper and lining
OUTSOLE | Career Casual
HEEL HEIGHT | 1¼ Inch
SIZE RUN | 35–42



KOU-601
BLACK NAPPA



SITKA

- APMA accepted
- Removable footbed; replacement available in medium and wide (ALG-999 footbed)
- Inside zipper
- Stain-resistant upper
- Knitted collar accent
- Suede leather footbed
- Slip-resistant outsole
- Non-marking outsole

MATERIAL | Leather Upper with Warm Lining
OUTSOLE | Career Casual
HEEL HEIGHT | 1¼ Inch
SHAFT HEIGHT | 3½ Inch
CIRCUMFERENCE | 13 Inch
SIZE RUN | 35–42



SIT-7857
BLACK



SIT-7858
BROWN



CAITI

- APMA accepted
- Patented removable footbed; replacement available in medium and wide (ALG-999 footbed)
- Hand-stitched
- Adjustable hook-and-loop closure with hardware
- Pull tab for easy on-and-off
- Padded collar
- Suede leather footbed

MATERIAL | Leather upper with warm lining
OUTSOLE | Mini Outsole
HEEL HEIGHT | 1 Inch
SHAFT HEIGHT | 3½ Inch
CIRCUMFERENCE | 13 Inch
SIZE RUN | 35–42



CAT-7824
COCOA IMPRESSION



CAT-7825
INK IMPRESSION



CAT-7837
SUBTLE TEASE



LEISURELEE

- Footbed with built-in arch support
- Non-flexing mild rocker bottom
- Lightweight outsole

MATERIAL | Vegan shearling upper, lining and footbed
OUTSOLE | Cozy Comfort
HEEL HEIGHT | 1¾ Inch
SIZE RUN | 35–43



LEI-7857
BLACK



LEI-7903
LEOPARD



LEI-7949
NATURAL

DAHLIA

- Removable footbed; medium width only
- Adjustable elastic hook-and-loop closure
- Padded collar
- Protective vegan leather mud guard and counter
- Dual-density polyurethane outsole
- Slip-resistant outsole
- Non-marking outsole

MATERIAL | Vegan leather upper with textile lining
OUTSOLE | Sport Rocker
HEEL HEIGHT | 1 Inch
SIZE RUN | 35–42



DAISIE

- Removable footbed; medium width only
- Adjustable hook-and-loop closure
- Padded collar
- Protective vegan leather mud guard and counter
- Dual-density polyurethane outsole
- Slip-resistant outsole
- Non-marking outsole

MATERIAL | Vegan leather upper with textile lining
OUTSOLE | Sport Rocker
HEEL HEIGHT | 1 Inch
SIZE RUN | 35–42



DAPHNE

- Removable footbed; wide width sizes available
- Adjustable laces
- Padded collar
- Protective vegan leather mud guard and counter
- Dual-density polyurethane outsole
- Slip-resistant outsole
- Non-marking outsole

MATERIAL | Vegan leather upper with textile lining
OUTSOLE | Sport Rocker
HEEL HEIGHT | 1 Inch
SIZE RUN | 35–42



POLY

- Medium width only
- Adjustable laces
- Stain-guarded upper
- Padded collar
- Protective heel counter
- Dual-density polyurethane outsole
- Slip-resistant outsole
- Non-marking outsole

MATERIAL | Textile upper and lining
OUTSOLE | Comfort Athleisure
HEEL HEIGHT | ¾ Inch
SIZE RUN | 35–42



POSY

- Medium width only
- Center elastic gore
- Padded collar
- Protective vegan leather counter
- Dual-density polyurethane outsole
- Slip-resistant outsole
- Non-marking outsole

MATERIAL | Vegan leather upper with textile lining
OUTSOLE | Comfort Athleisure
HEEL HEIGHT | ¾ Inch
SIZE RUN | 35–42



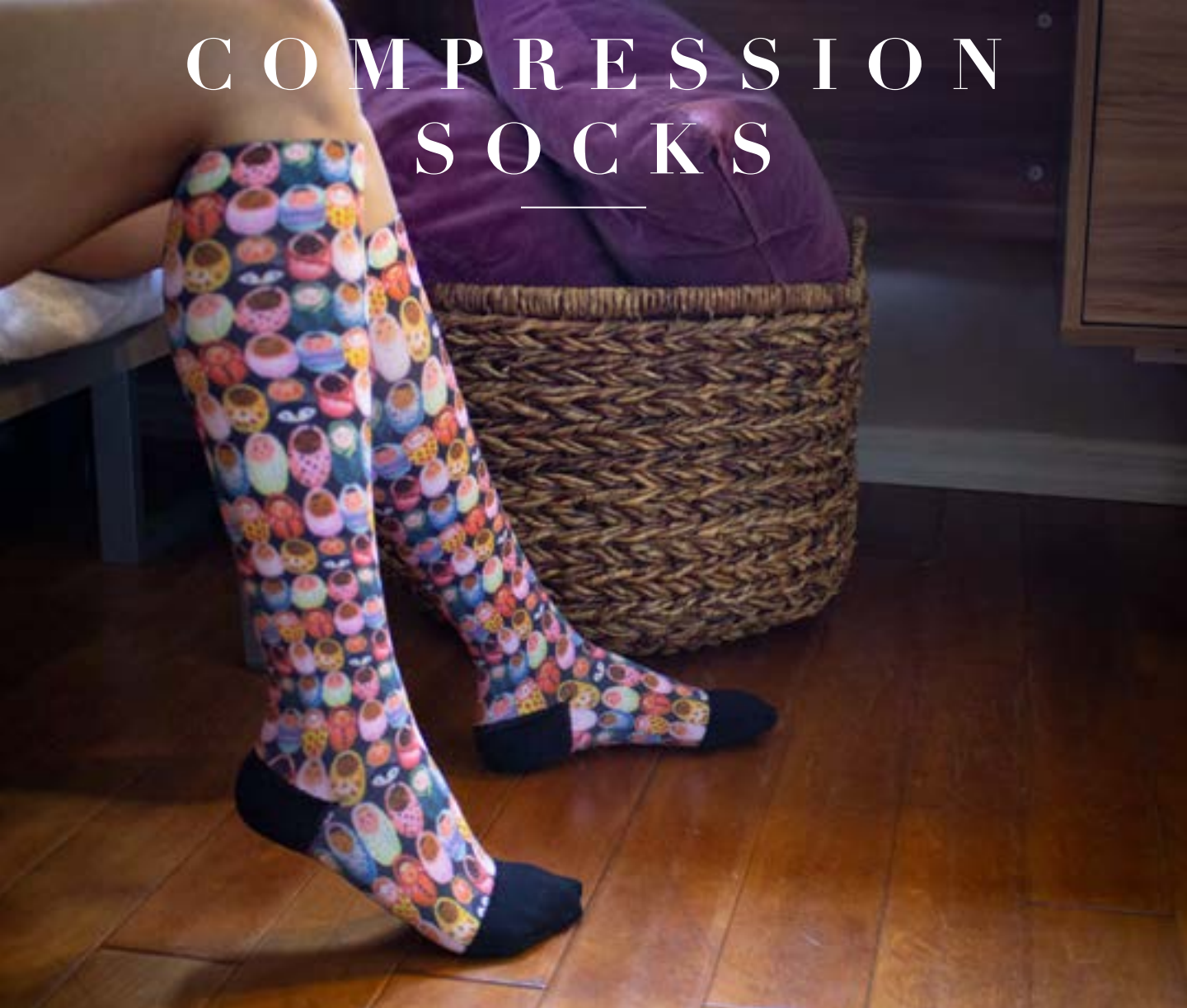
PARKER

- Medium width only
- Three elastic gores
- Pull tab for easy on-and-off
- Dual-density polyurethane outsole
- Slip-resistant outsole
- Non-marking outsole

MATERIAL | Vegan leather upper with textile lining
OUTSOLE | Comfort Athleisure
HEEL HEIGHT | ¾ Inch
SHAFT HEIGHT | 3 Inch
CIRCUMFERENCE | 13 Inch
SIZE RUN | 35–42



COMPRESSION SOCKS



Alegria has created the ultimate comfort companion for our amazingly comfortable shoes. Our first compression sock is made from soft nylon and comfortable stretch spandex that is adorned with our colorful prints. Graduated compression zones for the best circulation, allowing for support in the areas where you need it most. The cuff is non-binding so it gently hugs your calf but gives you all day support.

- MATERIAL** | Soft nylon fabric
SIZE RUN | S–XL
HIGHLIGHTS | • Graduated compression 15-20 mmhg
• Blister protection
• Moisture wicking
• Extra cushioning

NEW



ALG-92600
SUGAR SKULLS

NEW



ALG-92601
VINTAGE SCARF

NEW



ALG-92602
MIDNIGHT GARDEN

NEW



ALG-92603
FRESH BAKED

COMPRESSION ZONES

ZONE 5

LIGHT

Wide, non-binding cuff zone

ZONE 4

MODERATE - LIGHT

Graduated Compression
15–20 mmhg

ZONE 3

MODERATE

Shaped-to-fit, vented heel pocket

ZONE 2

MODERATE

Moderate arch support

ZONE 1

LIGHT

Shaped-to-fit, vented toe



SIZE	ANKLE CIRCUMFERENCE	CALF CIRCUMFERENCE
S	7-8.25in / 18-21cm	11-15in / 28-38cm
M	8.25-10in / 21-25cm	12-16.5in / 30-42cm
L	10-11.5in / 25-29cm	12.5-16.5in / 32-46cm
XL	11.5-13in / 29-33cm	13-19in / 34-49cm

SIZE CHART		
S	US: W4–6.5	UK: 1–5
M	US: W7–10	UK: 5–8.5
L	US: W10.5+	UK: 9–11
XL	US: W13+	UK: 11+



Alegria's Footbeds



Replace an old footbed or convert an Alegria by PG Lite® shoe to wide width with our patented footbeds. Our signature removable footbed is ergonomically designed to fit the natural contours of your feet; working to relieve your legs, hip, and back from long standing hours.

The signature footbed contains our specifically-formulated soft polyurethane, cork and memory foam blend, and is lined with supple leather.

SIZE RUN | 35-44 AVAILABLE IN MEDIUM AND WIDE



APMA ACCEPTED
Alegria by PG Lite® has been awarded the American Podiatric Medical Association (APMA) Seal of Acceptance*
*on select styles and footbeds

Alegria's Removable Footbeds



SIZE RUN | 35-44 AVAILABLE IN MEDIUM AND WIDE

SIZE INFO

EUR	35	36	37	38	39	40	41	42	43	44
US	5-5½	6-6½	7-7½	8-8½	9	9½-10	10½-11	11½-12	13	14



Alegria[®]

by PG Lite

910 S. Wanamaker Ave. Ontario, CA 91761 1-800-468-5191 AlegriaShoes.com

FOR AUTHORIZED RETAILERS ONLY. INFO SUBJECT TO CHANGE WITHOUT NOTICE. COPYRIGHT 2020 PEPPER GATE FOOTWEAR INC. ALL RIGHTS RESERVED.